

Farmington Land Trust Board of Directors:

Doug Pelham, President
Debbie Klene, VP/Secretary
Bruce Fernandez, Treasurer

Tina Delaney, Executive Director
Suzan Scott, Assistant to
the Executive Director
Farmington Land Trust, The Canal House
128 Garden Street, Farmington, CT 06032
Office Hours: M-F 9am—12 pm,
Phone: 860-674-8545
E-mail: farmingtonland.trust@snet.net,
Website: www.farmingtonlandtrust.org

Board Members:

Richard Berlandy
Michael Delaney
David DeNuccio
Richard Kramer
Charles Leach
Michael Lecours
Heidi Maresh
William Novoa
Angham Zakko

A Thank You to Local Companies who support us! Briarwood Printing , Plainville; Collin Landscaping; Torrington, Del Conte, Hyde, Anello & Schuch, PC, Farmington; Hodge LLC, Farmington; Meadwood LLC, Farmington.

Special Thanks to our 2012 Silent Auction Business Donors - You made this year's Event a Success! CVS Pharmacy at Highland Park Plaza, Double J's Smoke-N-BBQ , Haworth's Flowers & Gifts, Highland Park Market, Eastern Mountain Sports (EMS) in West Hartford, Farmington Club, Farmington Frame Company LLC, Farmington Valley Nursery in Avon, Franklin Jewelers, Farmington, Little Red Clock Shop, Lux Bond & Green in West Hartford, M&R Liquors, Monarch Jewelers, REI in West Hartford, Sterling Jewelry, Hill-Stead Museum, Super Cellar Warehouse Liquors in Avon, Trader Joe's in West Hartford, Tunxis Plantation Pro Shop.

Newsletter designed and edited by Angham Zakko



Return Service Requested

Non-Profit
Organization
US POSTAGE
PAID
Permit # 24
Farmington, CT



Farmington Land Trust

Inside this Issue:

- Out & About**
- Nature Notes**
- A Note of Thanks**
- Geocaching Adventures**
- 2012 LTA Rally**

Out & About



This spring The Farmington Land Trust started a new monthly series, 'Strolls on the Land'. In May renowned birder Milan Bull, Senior Director of the CT Audubon, led a walk at the Land Trust's Cowles parcel on Meadow Road. A hike to Will Warren's Den followed in June, led by FLT Director Bill Novoa. This 'stroll' offered breathtaking views of our town and the mountains beyond. Jay Kaplan, Director of Roaring Brook Nature Center, took us on a nature 'stroll' at our historic Aqueduct Canal parcel in September. Doug Pelham, President of the Land Trust, finished this year's stroll series at Anderson Ridge with hands on 'How to Geocache' instruction while taking in a beautiful autumn sunset and view of the valley from the ridge top. Each of these strolls offered a unique opportunity to get out and enjoy what is in your own backyard.

The Farmington Land Trust has also had several opportunities this year to collaborate with other organizations. We entered into an understanding with Central Connecticut State University professors and selected undergraduate and graduate students to conduct natural resources inventories at several of our parcels. In addition, the Land Trust is exploring a partnership with REI, a national sporting goods chain, to allow them to conduct their outdoor educational classes on Land Trust parcels starting this coming winter.



In celebration of CT Trails Day in June, we sponsored a 1½ mile hike to one of our newest parcels, Anderson Ridge. The Anderson Ridge trail head abuts the Carey Pasture and participants were rewarded with fields full of wild flowers and song birds. Join us next year as we again sponsor CT Trails Day to celebrate open space in our town.

In addition the Land Trust is the beneficiary of an Eagle Scout project at Carey Pasture and Anderson Ridge. The path has been cleared, the trail re-blazed, and steps installed to stabilize some of the steeper grades near the lookout area. When this project is complete there will be a state of the art kiosk with a scanable bar code to download the trail map onto your smart phone! The Land Trust is grateful to Eagle Scout candidate Dan Handiman, Troop 68, and his Eagle Scout advisor, Frederic De Baek for this effort. We would also like to thank Troop 68 for helping us put some of our most popular parcels back in shape after last October's snow storm. It is because of our volunteers and community support and helping hands from abutting neighbors, our recovery efforts are farther along and The Farmington Land Trust is grateful to have such involvement. (continue on page 2)



Save the Date !FLT's 42nd Annual Meeting & Banquet April 11th, 2013

Out & About (cont.)

The Unionville Festival in September was a great way to say goodbye to summer and embrace the fall. The weather was perfect and the attendance among the highest for the festival. Directors Michael Delaney, David DeNuccio, Bill Novoa, President Doug Pelham and Richard Kramer were on hand to meet and greet visitors. And thanks to former President Kathy Wadsworth who stopped by to help out too!

Our River Otter was a show stopper and we used the opportunity to speak to people about The Farmington Land Trust and our mission for our town and its residents. Thank you to all the great team of UVIA organizers for this wonderful event! We look forward to next year's festival.

- Tina Delaney



Left: Board members at the Unionville Festival, September 30th, 2012. Above: with 'Otto the River Otter' is Board member Bill Novoa and Executive Director Tina Delaney. Below: President and FLT board members with Kathy Wadsworth.

Nature Notes:

Trash Barrels + Outside = Bears in the yard!!



Check the BEAR facts at: http://www.ct.gov/dep/lib/dep/wildlife/pdf_files/outreach/fact_sheets/bear.pdf



A Note of Thanks!

As the steward chair for The Farmington Land Trust it is my responsibility when there is an issue on one of our parcels with a fallen tree or a dangerous hanging branch to see that the problem is resolved. We have occasionally this past year made a request for volunteers to help clear fallen trees. One steward in particular has responded each time and I would like to take this opportunity to thank Steve Nelson for the many hours he has put in cutting up dozens of downed trees and fallen branches that were blocking access to some of our most scenic properties. Steve is the steward for the Cowles parcel and his help has been invaluable. - Michael Delaney



We've gone Social! A great way to stay connected is to look for our home page, Farmington Land Trust, on Facebook and LIKE us to keep up with all the latest news, activities and information!



Geocaching Adventures - A great way to get the whole family outdoors and have fun too!

By president Doug Pelham

Have you ever been on a treasure hunt? Yes, but maybe many years ago? Well, you can go on one any time you want if you have a hand-held GPS device or a smart phone. Geocaching is a world-wide treasure hunt where you look for small "caches" or containers hidden in parks, on trails, and at historic locations all around town, the state, and even the world. The Farmington Land Trust has 7 geocaches on our various properties. The way it works is you find the latitude and longitude location of the geocache (which is listed on and can be downloaded from www.geocaching.com, or automatically entered into your smart phone through an app), drive to the parking area, and then hike the trail to the location. The GPS locator will bring you to within 15 to 30 feet of the actual location, and then the hunt is on! Usually the geocache is hidden under a pile of rocks, in an old stump, or the bole of a tree. Once you find it, there will be a log book to sign, and in the larger geocaches, some small toys and trinkets to trade. So make the kids turn off the video

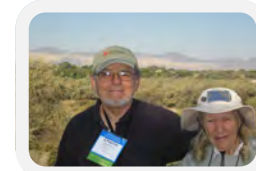


Check out these geocaches on Farmington Land Trust property:

Geocache Name	Property	Parking location
Hawk's Cry	Bancroft	Route 4/Prattling Pond Commuter Lot
Farmington Aqueduct	Aqueduct	Route 4, opposite Aqueduct Ln.
The Meeting of Two Rivers	Cowles	Meadow Rd., Fieldstone Bridge
Willy's Pasture Cache	Carey	2 nd Driveway, N side of Mountain Spring Rd.
Talcott Ridge Cache	Carey	2 nd Driveway, N side of Mountain Spring Rd.
Stroll on the Land #1	Carey	2 nd Driveway, N side of Mountain Spring Rd.
Hike and a View	Wadsworth Memorial	Route 6 near Pinnacle Rd.

2012 LTA RALLY: SALT LAKE CITY

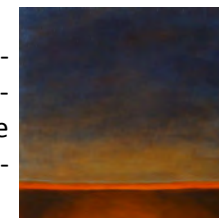
The Land Trust Alliance – umbrella organization for all US Land Trusts – held its annual "Rally" in Salt Lake City September 29th thru October 2nd. As always, this signature event brought together thousands of devoted environmentalists for 4 days of learning in areas of science, advocacy, strategy, and program & governance. We were like family, and it was so good to be with people who really care about the environment and have the skills and determination to take action. I attended breakout sessions on invasives management and Connecting People to Conservation Through the Arts. There is increasing attention to urban gardens and urban agriculture. I hope to help raise awareness in our region of the tremendous practicality and usefulness of these enterprises. Connecticut is underprovided with urban agriculture, and misses out on its social as well as nutritional benefits. Growing food on urban waste areas brings together neighborhoods, diminishes isolation engages at-risk youngsters and is a great venue for social exchange. We need more, and I believe our Land Trust can collaborate to make that happen.



Above Charlie Leach at Rally. below photo of one year old urban garden in suburb of Salt Lake City



Next year's Rally will be in New Orleans and will be great fun and a great learning opportunity. Each year's Rally takes us to a different region, and our horizons are widened by each. There are ways to reduce cost, and LTA offers some "scholarships", particularly for staff. I urge our members, board and staff colleagues to attend. - Charlie Leach



A painting of Nature by our assistant to the executive director Suzan Scott, The early hours no.1 www.suzanscott.com